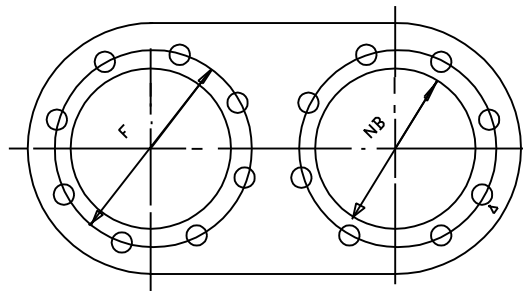


14	WASHER	4	CAST IRON	IS:210GR.FG.-200
13	LOCK NUT	2	CARBON STEEL	IS:1363
12	BODY RING	2	STAINLESS STEEL	IS:660304CR18NI10 OR EQUIVALENT
11	RUBBER RING	4	E.P.D.M	
10	C.I. PLATE	2	CAST IRON	IS:210GR.FG.-200
9	BODY	1	CAST IRON	IS:210GR.FG.-200
8	NUTS & BOLTS	AS REQD.	CARBON STEEL	IS:1363
7	BUSH		H.T. BRASS	IS:320 GR-2
6	COVER	1	CAST IRON	IS:210GR.FG.-200
5	GLAND	1	CAST IRON	IS:210GR.FG.-200
4	SPINDLE	2	STAINLESS STEEL	IS:6603 20Cr13 OR EQUIVALENT
3	BRIDGE	1	CAST IRON	IS:210GR.FG.-200
2	SPINDLE	1	STEEL	EN - 8
1	HAND WHEEL	1	CAST IRON	IS:210GR.FG.-200
SL.NO.	DESCRIPTION	QTY. PER SET	MATERIAL	SPECIFICATION

PARTS LIST

2 TYPE OF VALVE. DOUBLE BEAT
1 DESIGN CODE : CALSENS

NOTES



ALL DIMENSIONS ARE IN MM. UNLESS STATED OTHERWISE
 FLANGE DRILLING STD. IS: 1538 OR AS PER CUSTOMER ORDER

THIS DRAWING IS THE PROPERTY OF CALSENS PVT. LTD. KOLKATA.

IT MUST NOT BE COPIED, LOANED OR USED OTHERWISE, THAN FOR THE INSTALLATION OR USE BY APPROVED VENDORS.

CLINTS NAME:

OUR JOB NO.-

CALSENS PRIVATE LTD. KOLKATA

TITLE: ASSEMBLY DRG. FOR DOUBLE BEAT VALVE

DRAWN S.S.G 22.6.10 SCALE : N.T.S.

CHECKED B.P.B

APPROVED A.S.D

FILE NAME :BVNEW12M

DRG. NO. CPL.- 900039

REV. 0